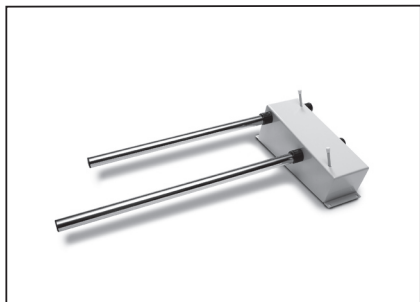


# WallRack



WallRack is a wall-mounted hanger that is used mainly for storing disposable covers for EasySlide and RollerSlide, but can also be used for storing the products themselves.

WallRack is part of a series of different models of transfer assistive devices. The choice of model and material is determined by the patient's functional capacity and the situations in which the product is to be used.



## Functional inspection

---

### Visual inspection

Check the condition and function of the assistive device regularly. If there are signs of wear, the product must be discarded.

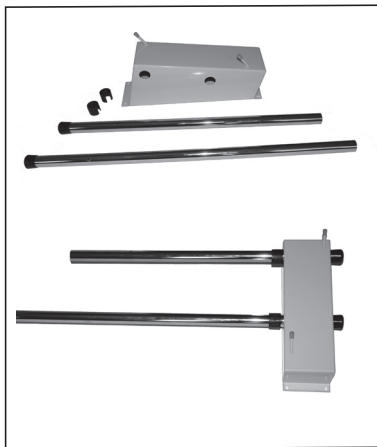


## Always read the manual

---

Always read the manuals for all assistive devices used during a transfer.  
Keep the manual where it is accessible to users of the product.

## Wallrack



WallRack can be mounted either right-hung or left-hung on the wall.

Easily disassembled for remounting hangers on either the left or right side of the mid-section.

### Care of the product:

Clean with dishwashing liquid or disinfectant. Wipe with a cloth.

Contact your local distributor if you have any questions about the product and its use. See [www.vancare.com](http://www.vancare.com) for a complete list of distributors. Always make sure that you have the right version of the manual. The most recent editions of manuals are available for downloading from our website, [www.vancare.com](http://www.vancare.com).

Manufactured for:

Vancare, Inc.  
1515 First St  
Aurora, NE 68818  
1-800-694-4525  
[www.vancare.com](http://www.vancare.com)  
[info@vancare.com](mailto:info@vancare.com)

**VANCARE**<sup>®</sup>  
We move body and mind